

AlphaLUXX construction site lighting

A system developed by GIFAS which consists of luminaires, a triple holder, magnets and bonding clamps.

Customer/installation engineer:	Müller Technologie AG
Requirement:	Optimisation of the existing construction site lighting
Solution:	AlphaLUXX LED spotlights with a system performance of 60W each, mounted on a triple holder.
Article:	200053 (AlphaLUXX)/066758 (cable reel)
Quantity:	152 piece
Areas of application:	Railway track construction

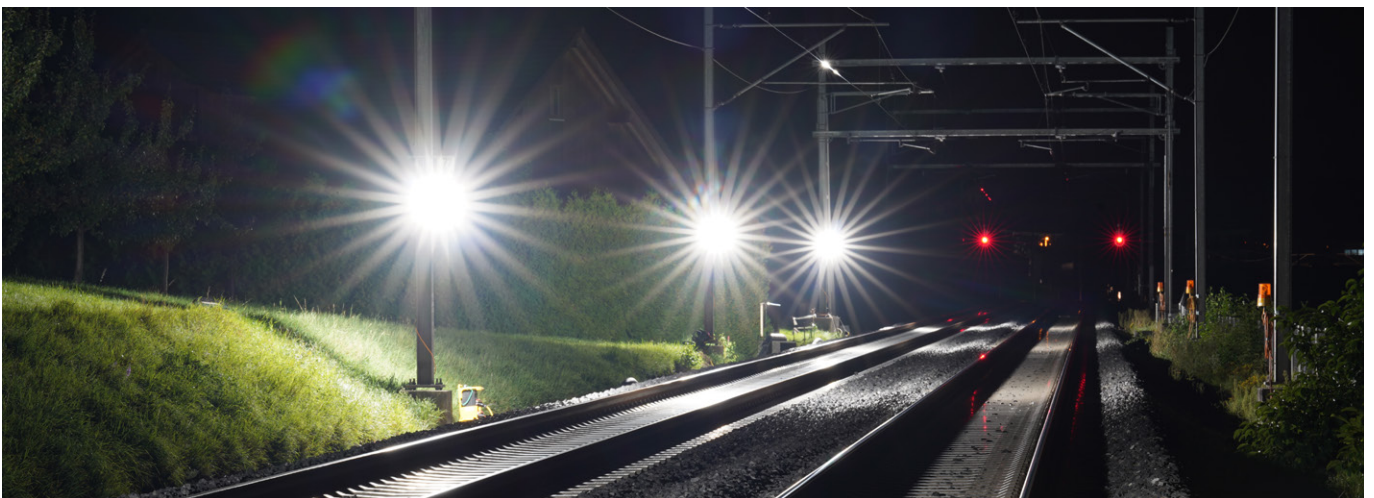
Starting situation

The AlphaLUXX high-power spotlights incl. triple holder were developed for optimisation of the existing construction site lighting. The lighting can be quickly and securely installed thanks to magnetic clamps (540 N) and pole clamps. The angle of the spotlight can be laterally adjusted by means of two star knobs. The cable is rolled up on the integrated reel to prevent tripping hazards.

The cable reel type 503 from GIFAS was used in combination.

Customer benefits

- SBB-certified; no disturbance to train drivers
- the best possible illumination with low power consumption
- quick and secure installation
- construction site lighting for track works
- the system can be hired or purchased



V01119